



It was crucial to the architects that the new townhouse be clad in a brick that articulated and stressed the verticality of the façade.



The protruding ground floor façade facing out onto the courtyard is also brick clad.



Every Kolumba brick bears the thumbprint of the person who brushed it.



Site plan

Karel du Jardinstraat

A NEW COMPLEX IN THE HEART OF AMSTERDAM IS ATTRACTING A GREAT DEAL OF ATTENTION, PARTLY DUE TO ITS INNOVATIVE BRICK CLADDING.

De Pijp was built as a working-class area in the 19th century. The name, Dutch for “The Pipe”, is thought to stem from the long, straight streets. The area’s cheap housing later attracted students and artists, including Piet Mondriaan, who had a studio here in the early 1900s. De Pijp eventually evolved into the city’s Latin Quarter.

Still an attractive place to live, De Pijp has a unique ambience, numerous museums and galleries, and an abundance of restaurants serving food from all over the world. In 2015, the family-owned property company Caransa Groep bought Karel du Jardinstraat 61-67. It planned to convert the site into a residential complex with social functions on the ground floor and commissioned ZZDP Architecten for the project. The result is a beautiful and harmonious development well integrated into the surrounding architecture.

The Karel du Jardinstraat 61-63 building was built in 1920-21 and has been used for various purposes over the years, e.g. clothing business. From 1987 until 1998 it was occupied by the office of Stadsdeel Zuid.

The renovation element of the comprehensive project consists of two preserved five-storey brick buildings – nos. 61-65 – which have been completely transformed, with new doors, windows, roof and a glass tower.

To the right, no. 67 replaces the original – now demolished – two-storey block. Like its neighbours, the new building also has five floors but is somewhat shorter due to the lower ceilings in the 24 duplex apartments.

De Pijp’s aesthetic is dominated by brick, so it was the obvious choice for the new part of the project. However, the architects and client also wanted the bricks to look unique. They wanted a material that would emphasise and articulate the verticality of the façade, so Kolumba was the natural choice.

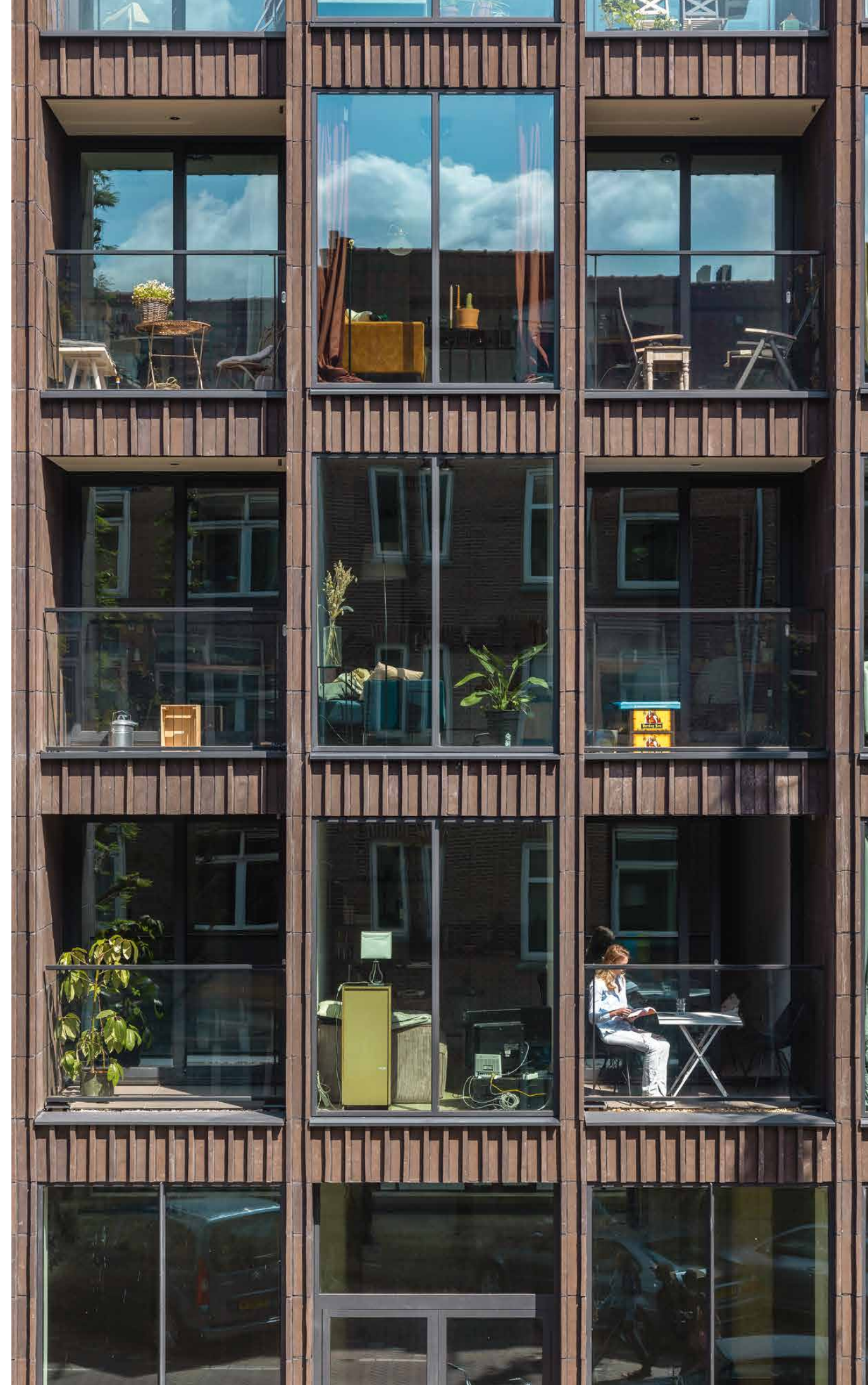
The new building is simple, beautifully rhythmic and well-proportioned. The vertical lines on the façade are created by seven columns of floor-to-ceiling windows that run from the first floor up to the flat roof, between which are inset balconies. At ground-floor level, the windows blend into both the façade’s volume and the vertical lines.

Horizontal brick bands run along the building at pavement level, above the ground floor and in the columns below each window. Here, the special-format bricks have been laid in an unusual way: vertically, with the surface outward, alternating with an edge-on, protruding vertical band of 490 x 100 x 15 mm Kolumba. This rhythmic relief generates a play of light and shadow that changes the look of the building throughout the day.

The inner balcony walls are also clad in Kolumba, laid vertically and facing outward. As a result, the balconies’ rustic brick walls are clearly visible from the street, giving the building the appearance of a solid brick mass, despite the large glass sections.

The façade overlooking the garden is less articulated, with no columns or balconies. Towards the street, however, the vertical motif is repeated. To the rear, the ground floor extends into the garden with a prominent, flat-roofed glass section adding 50 m² extra space to the business premises.

As you stroll down Karel du Jardinstraat and catch a glimpse of the new complex, especially the brand-new building, it can’t help but lift your spirits. The project attests to the desire and ability to rethink how brick is used while also honouring the fundamental character of the material. Karel du Jardinstraat 61-67 is a wonderful example of refined, crisp and elegant design in fired clay.



To achieve the look they wanted on the façade, ZZDP Architecten used Kolumba on the surface, combined with a vertical strip of the same brick. The result is a play of light and shadow that changes the look of the building throughout the day



Karel du Jardinstraat, apartments and business premises, Amsterdam, The Netherlands

Client/owner: Caransa Groep B.V.

Architect: ZZDP Architecten

Contractor: Hillen & Roosen B.V.

Engineer: Van Rossum Raadgevende Ingenieurs B.V.

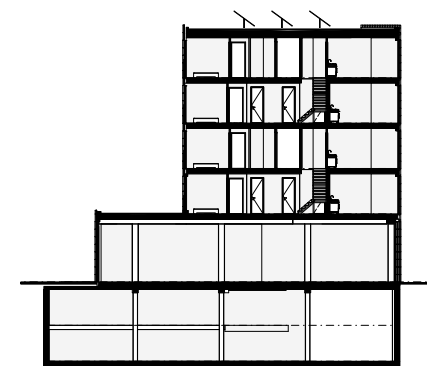
Completed: 2021

Brick: Kolumba, special colour F-402. Special formats:

490 x 100 x 38 mm and 490 x 100 x 15 mm

Text: Ida Præstegaard, MA in Architecture

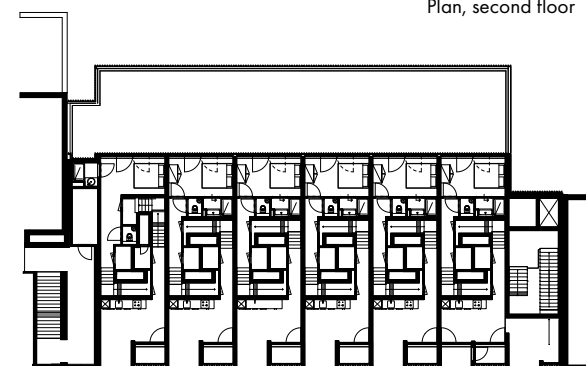
Photos: Luuk Kramer



Section



Plan, second floor



Plan, first floor